



ShenZhen GreenTouch Technology Co.,Ltd

TB-seriesAssemble User Manual



Contact: Peter.Wan

Tel:+86-755-29371519-8018

Skype:wanli889

Mobile: +86 13823548639

QQ:2355562940

Fax:+86-755-29235565-8008

Wechat:13823548639

Email:peter@greentouch.com.cn

Web: www.touchscreenfactory.com

Add:3rd Floor,Building A2,ShenZhen Low-Carbon Science Industrial Park,Sillicon Valley
Power,Guiyue Road,Zhangge Market,Guanlan Town,LongHua New District,ShenZhen
City,518110,China

Assemble user manual instruction:

Accessory list (as below pic):

1. X axis transmitting tub 1 pcs
2. Y axis transmitting tub 1 pcs
3. Y axis receiving tube 1 pcs
4. X axis receiving tube 1 pcs

Screws: 10 pcs (one screwdriver)



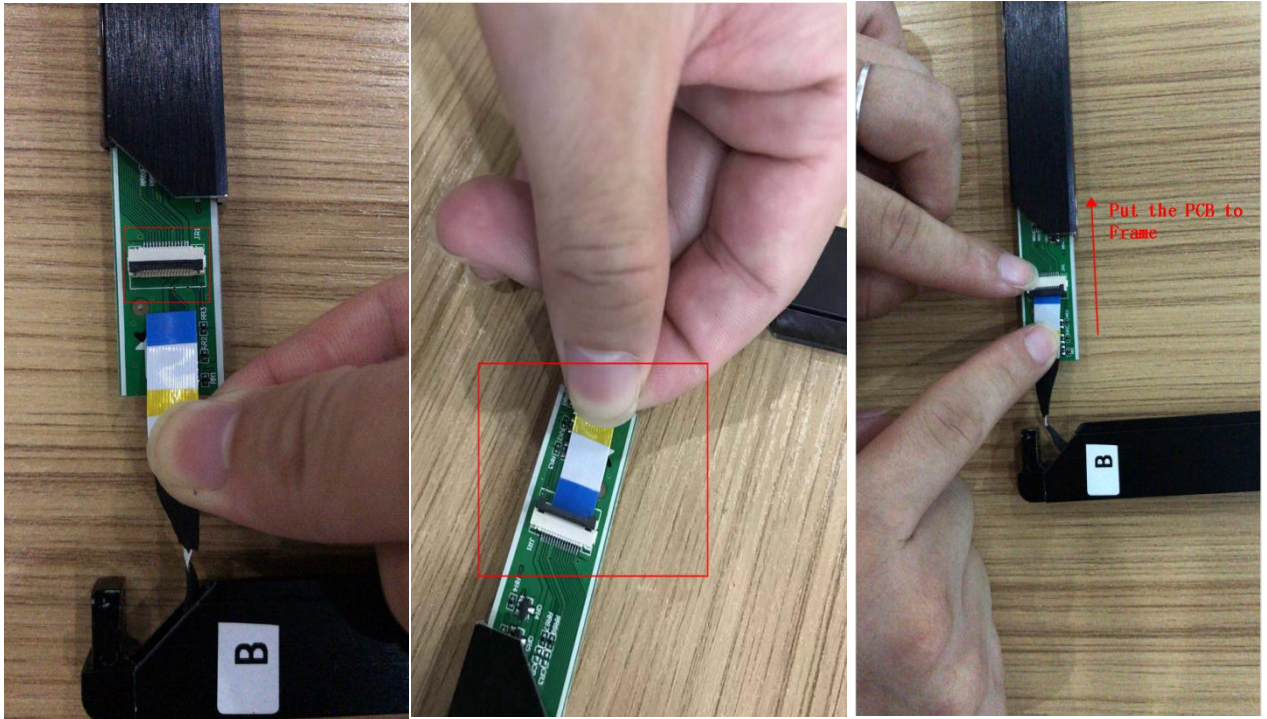
Step : 1

Find the right place A-A , B-B , C-C , D-D .



Step 2

At the corner of B-B , lift the black buckle up for the connector (Please don't be too hard , is damaged easily). Pick up the B side , Insert the FPC cable (blue face is up) into the FPC connector , and lock the buckle .The FPC cable unfold , easy to break . When connect well . Be careful to push the PCB into frame .As below pictures show :



Note : The A and D side no need to connect , Because we have connect it well . But i suggest you to check it whether it loose. (C side don't have cable)

Step 3

Take the touchscreen on the back to the desktop , and take the cable and wiring into the slot .Tighten the screws (A-A , B-B ,C-C ,D-D)



Step 4



The front of touch frame is label A , B , C , D . After assemble it well , put on monitor and connect the USB to PC . Overlay will turn monitor to touch.

Note : If there is any question , please contact us at above information . It is our great honour to serve you .